

MODEL NAME: MAXI-SKIMMER SSV/5

COLLECTION RATE:

- UP TO 20 GPH

BELT OPTIONS:

- 4" WIDE FLAT POLYURETHANE
- 4" WIDE 301 ST. STEEL

BELT LENGTHS (REACH – REFER TO LEFT SIDE VIEW):

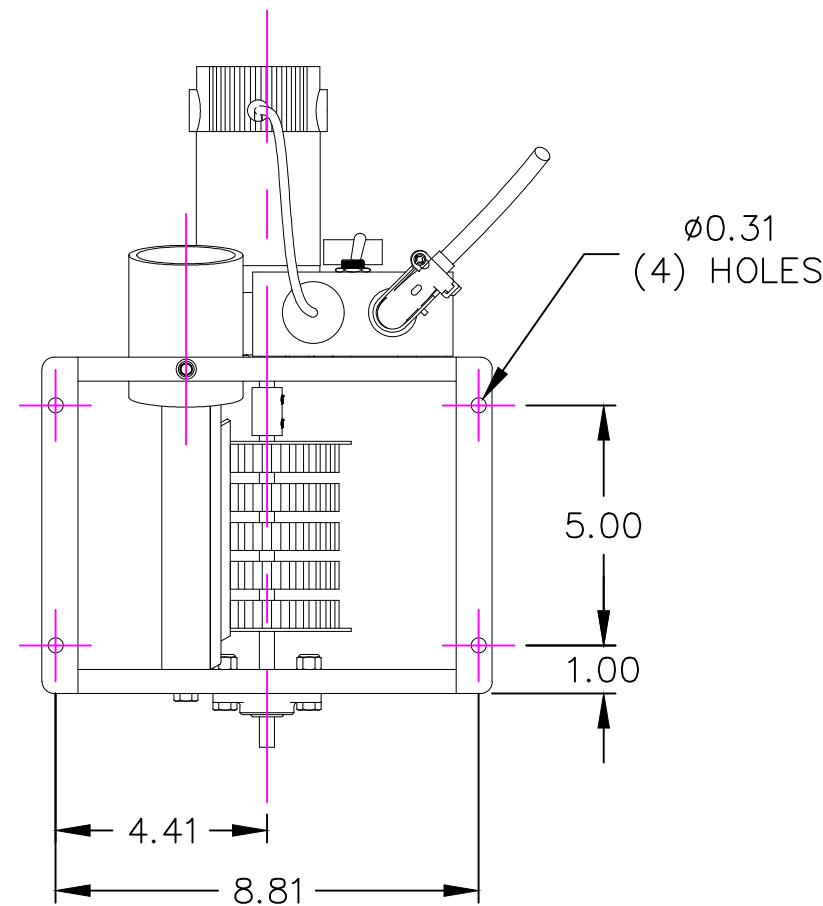
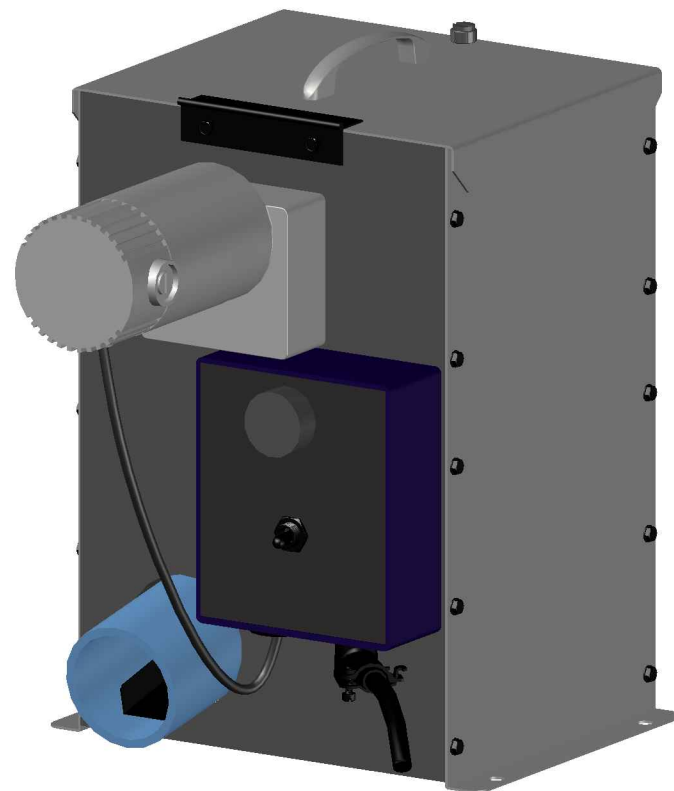
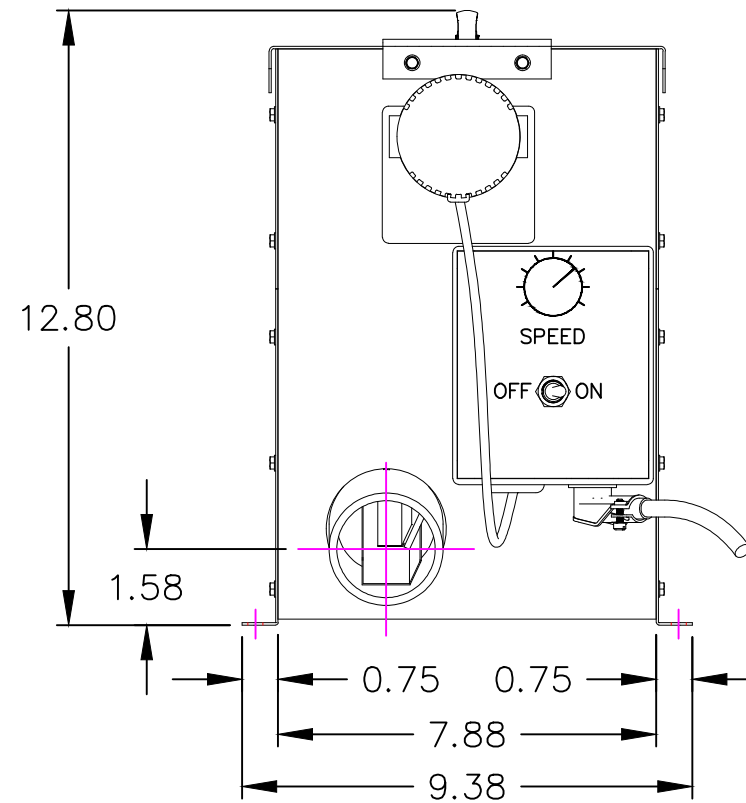
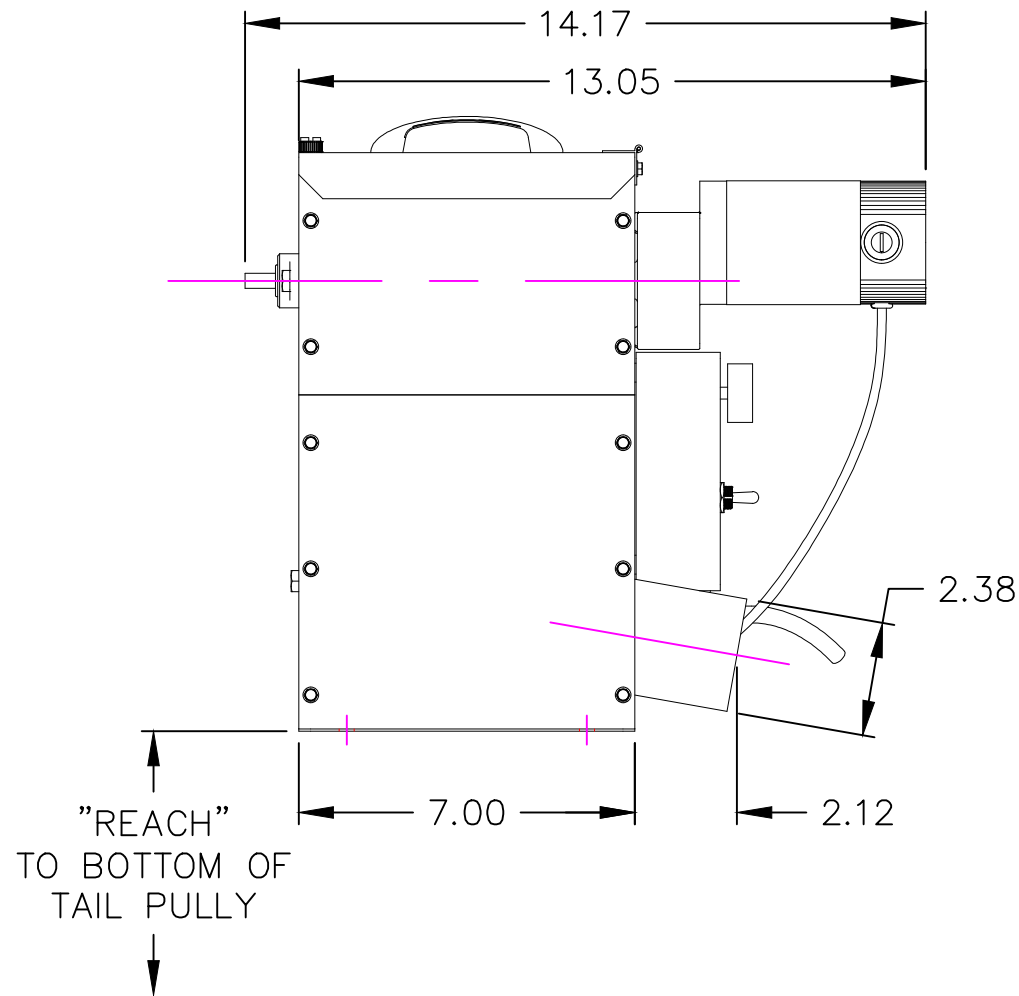
- TYPICALLY AVAIL IN 1 FOOT REACH INCREMENTS
- CUSTOM POLYURETHANE BELTS REACH AVAIL.

POWER REQUIRMENTS:

- 115-220V/1PH/50-60Hz
- 10' POWER CORD WITH IN-LINE GFCI STANDARD

INCLUDES:

- 3' DISCHARGE HOSE
- TAIL PULLEY
- TAIL PULLEY RETENTION CHAIN



THIS PRINT IS THE PROPERTY OF WAYNE PRODUCTS AND IS TO BE RETURNED IMMEDIATELY UPON DEMAND. THE INFORMATION DIMENSIONS, ECT. ARE CONFIDENTIAL AND ARE NOT TO BE DIVULGED OR SUBMITTED TO OTHERS. VERIFY DIMENSIONS AND SYSTEM LAYOUT ON INSTALLATION DRAWINGS BEFORE STARTING INSTALLATION. DUE TO CONSTRUCTION VARIATIONS, ACTUAL BUILDING DIMENSIONS MAY DIFFER FROM THOSE SHOWN ON DRAWINGS.

| | | | |
|-----------|--------|---------------------------------------|-----------|
| | | 888 Sussex Blvd. Broomall, PA 19008 | |
| | | Phone: 610-251-0933 Fax: 610-251-0948 | |
| Title: | | MAXI-SKIMMER | |
| | | 0-93 RPM VARIABLE SPEED | |
| Date: | size: | ckd by: | dwg name: |
| 2/13/23 | B | | SSV/5 |
| drawn by: | scale: | | sheet: |
| GRM | NTS | | 0 |