

MODEL NAME: MAXI-SKIMMER SSP/2

COLLECTION RATE:

- UP TO 6 GPH

BELT OPTIONS:

- 2" WIDE FLAT POLYURETHANE
- 4" WIDE FLAT POLYURETHANE
- 2" (2.25" ACTUAL) WIDE ST. STEEL
- 4" WIDE ST. STEEL

BELT LENGTHS (REACH):

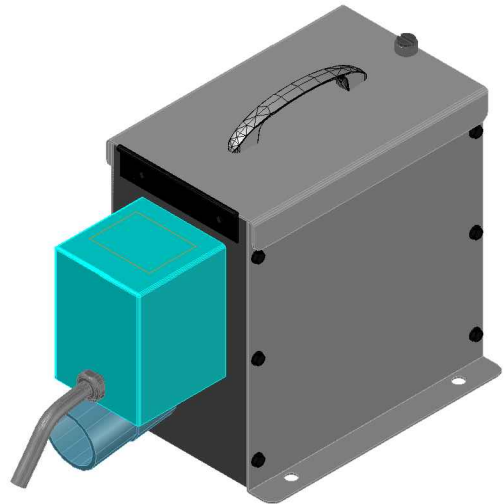
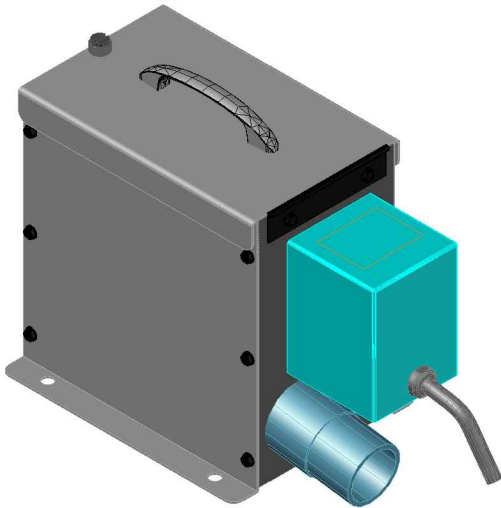
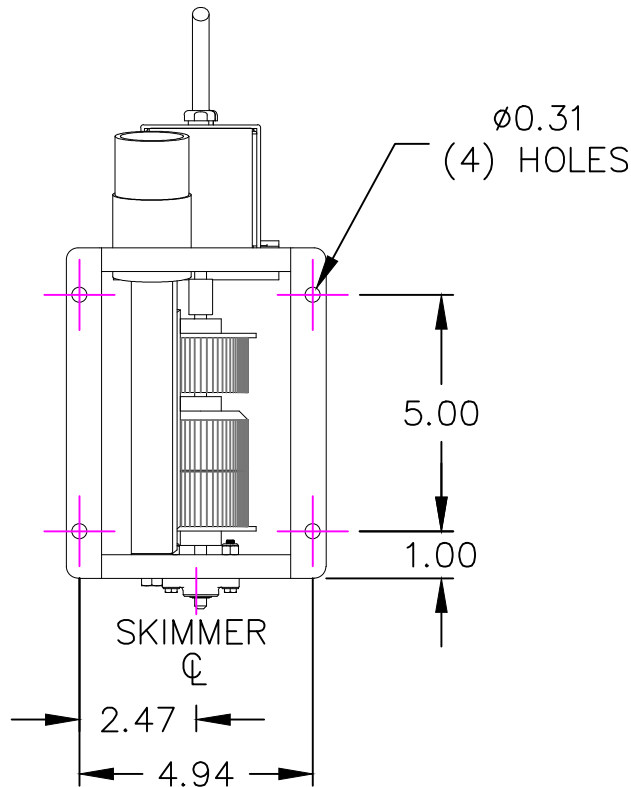
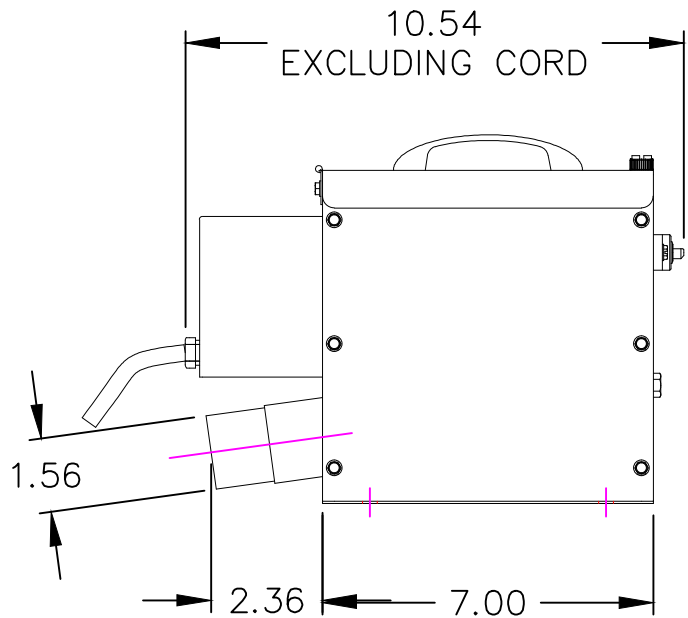
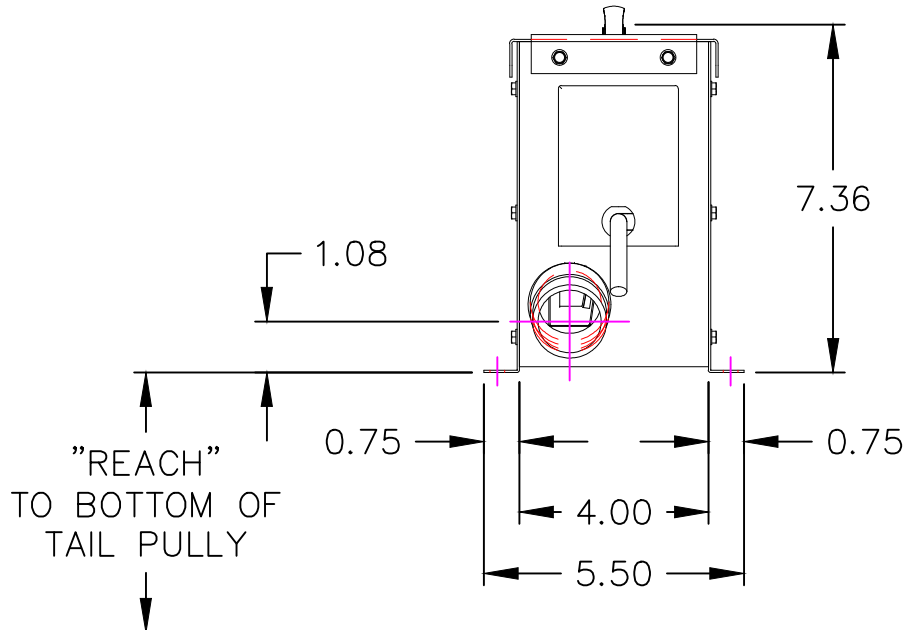
- TYPICALLY AVAIL IN 1 FOOT REACH INCREMENTS
- CUSTOM POLYURETHANE BELTS REACH AVAIL.

POWER REQUIREMENTS:

- 115V/1PH/60Hz
- 220V/1PH/50 OR 60Hz OPTION AVAILABLE
- 10' POWER CORD WITH IN-LINE GFCI STANDARD

INCLUDES:

- 3' DISCHARGE HOSE
- TAIL PULLEY
- TAIL PULLEY RETENTION CHAIN



THIS PRINT IS THE PROPERTY OF WAYNE PRODUCTS AND IS TO BE RETURNED IMMEDIATELY UPON DEMAND. THE INFORMATION DIMENSIONS, ETC. ARE CONFIDENTIAL AND ARE NOT TO BE DULGED OR SUBMITTED TO OTHERS. VERIFY DIMENSIONS AND SYSTEM LAYOUT ON INSTALLATION DRAWINGS BEFORE STARTING INSTALLATION. DUE TO CONSTRUCTION VARIATIONS, ACTUAL BUILDING DIMENSIONS MAY DIFFER FROM THOSE SHOWN ON DRAWINGS.



888 Sussex Blvd. Broomall, PA 19008  
Phone: 610-251-0933 Fax: 610-251-0948

Title: MAXI-SKIMMER  
30RPM FIXED SPEED

date: 9/1/22	size: B	ckd by: NTS	dwg name: SSP/2	REV
drwn by: GRM	scale: NTS			sheet# 0